

MONTHLY MEMBERSHIP PROGRESS REPORT

District 27 E2

Results as of: 5/31/2026

GMT:

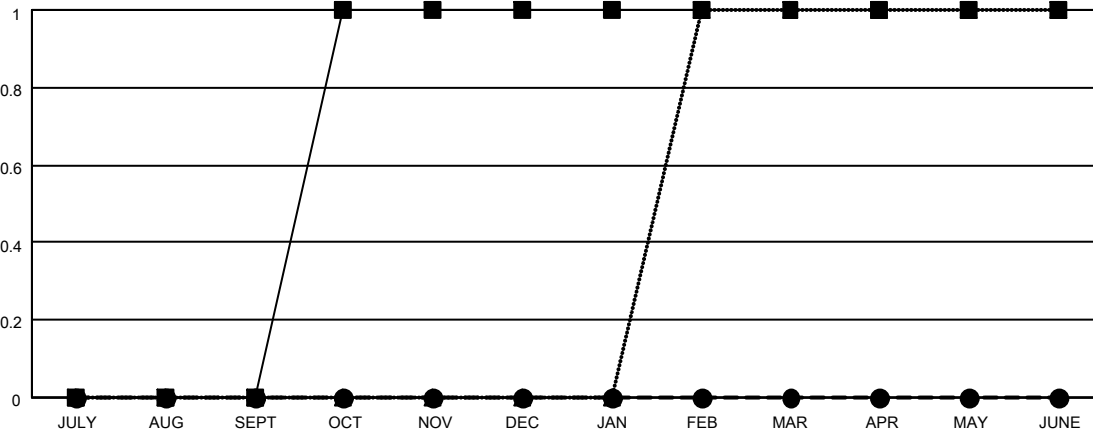
LOCATION WISCONSIN

GMT CA

Clubs			
RESULTS FOR 2025-2026			
QUARTER	NEW CLUB GOAL	NEW CLUBS	DROPPED CLUBS
JULY/AUG/SEPT	0	0	0
OCT/NOV/DEC	1	0	0
JAN/FEB/MAR	0	0	0
APR/MAY/JUNE	0	0	0

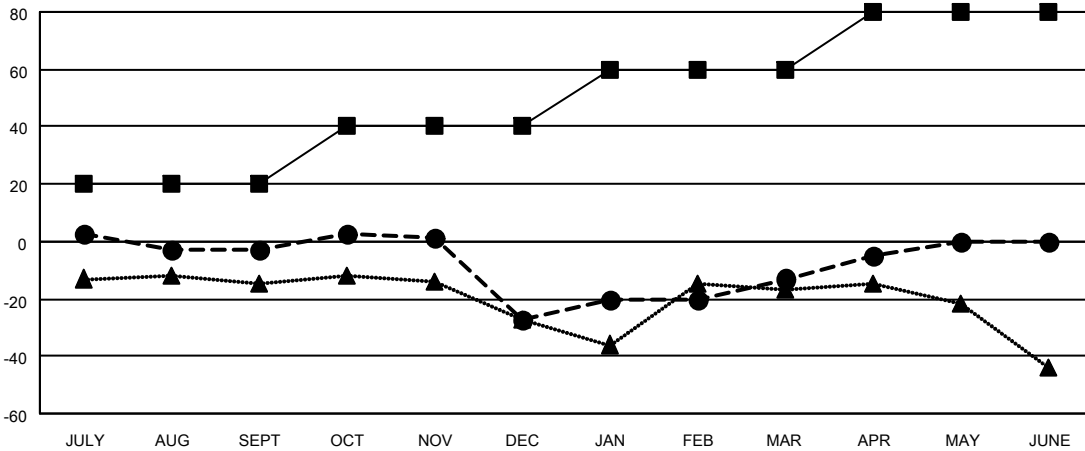
Members			
RESULTS FOR 2025-2026			
QUARTER	MEMBER GROWTH NET GOAL	MEMBER GROWTH ACTUAL	DROPPED MEMBERS ACTUAL (including transfers)
JULY/AUG/SEPT	20	30	33
OCT/NOV/DEC	20	21	42
JAN/FEB/MAR	20	34	20
APR/MAY/JUNE	20	25	10

GOALS AND ACTUAL NEW CLUBS CUMULATIVE



- - CURRENT YEAR GOALS FOR NEW CLUBS
- - CURRENT YEAR ACTUAL NEW CLUBS
- ▲ - LAST YEAR ACTUAL NEW CLUBS

GOALS AND ACTUAL MEMBERS CUMULATIVE



- - MEMBER GROWTH NET GOAL
- - MEMBER GROWTH ACTUAL
- ▲ - LAST YEAR MEMBERSHIP ACTUAL

DROPPED CLUBS: 0	28 CLUBS OF 43 ADDED 1 OR MORE NEW MEMBERS	GENDER DISTRIBUTION MALE 1,127 (71.78%) FEMALE 441 (28.09%)
DROPPED MEMBERS DECEASED 10 CLUB CANCELLED 0 OTHER 95 TOTAL 105	CLICK HERE FOR CUMULATIVE MEMBERSHIP DATA	TOTAL FAMILY UNIT MEMBERS 297 FAMILY MEMBERS PAYING HALF DUES 150